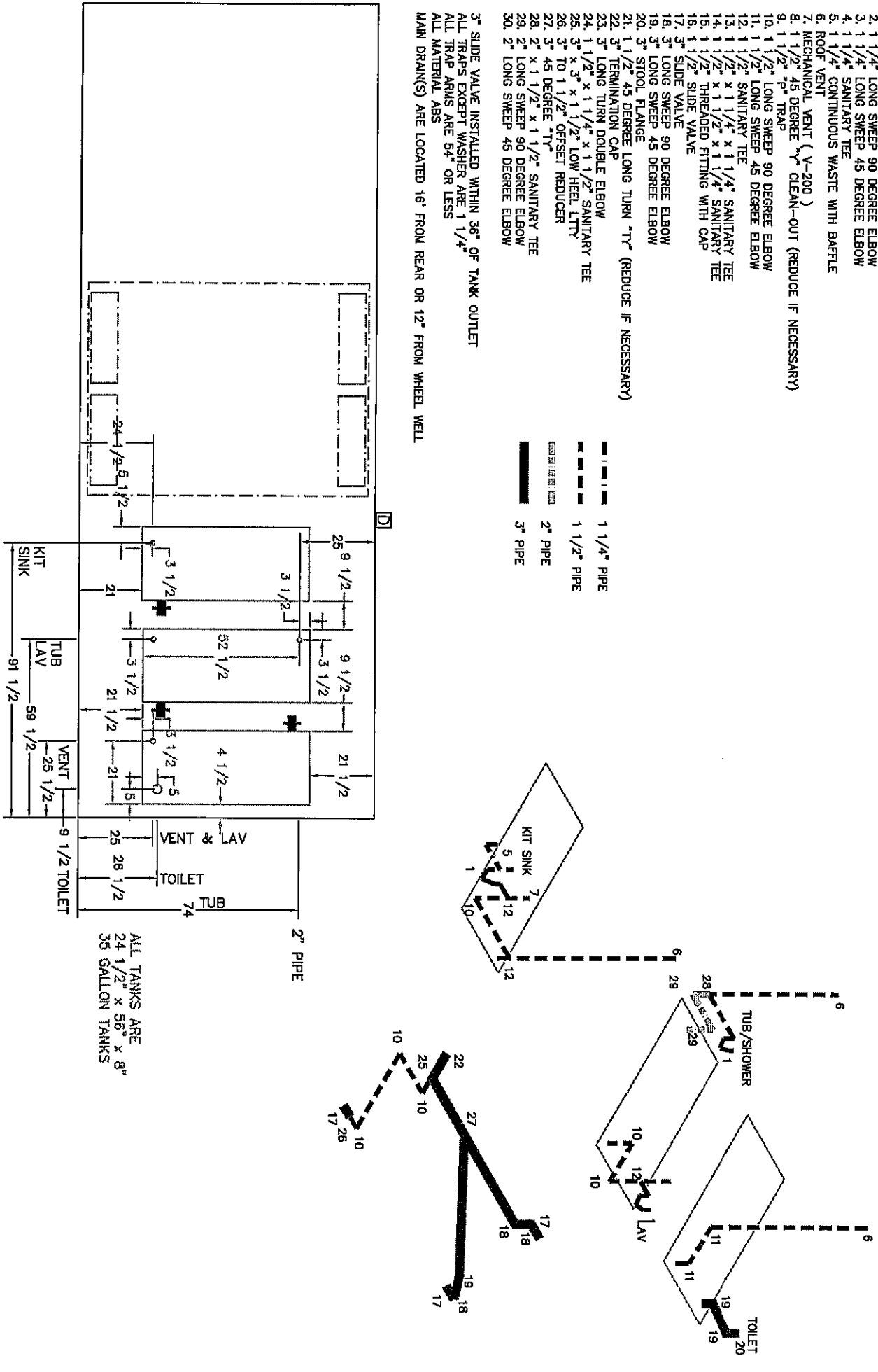
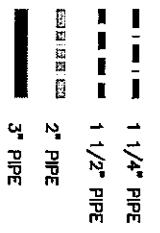


KING OF THE ROAD SOUTH FRONT ST. RUSSELL, KS. 67665

PRINT: DWV PLAN	REVISION	DATE
MODEL #: 2000_R31RL	1. ADD/CORRECT ID NUMBERS	5-14-99
SCALE: N.T.S.	2. CHANGED TUB WET VENT TO 2"	7-7-2000
DATE: 4-8-99	3.	
DRAWN BY: T. WERTH	4.	
DRAWING: 0731rhdw.dwg	5.	

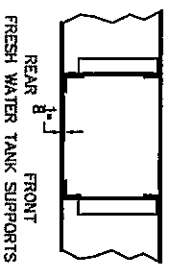
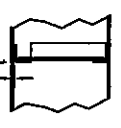
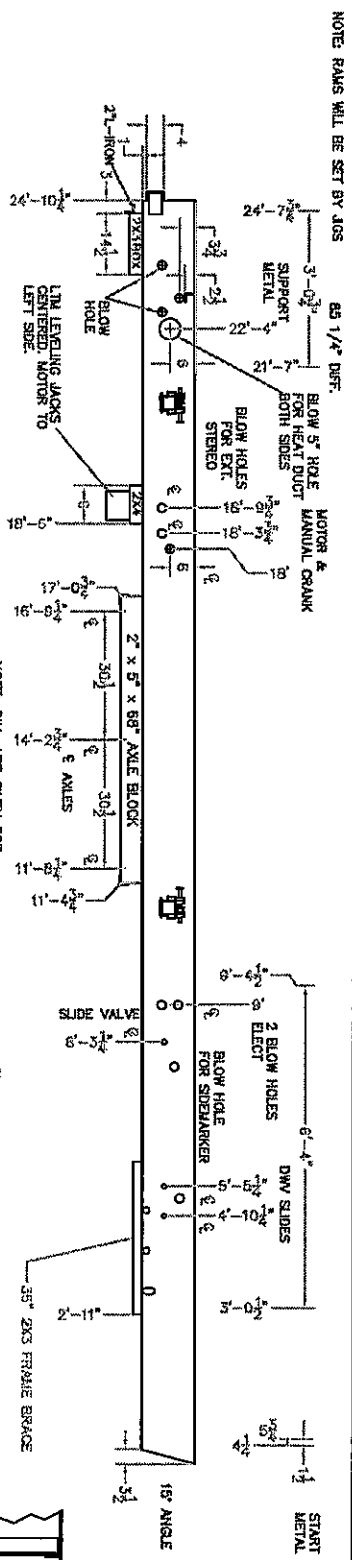
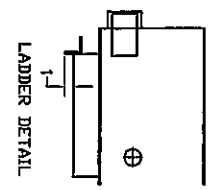
1. 1 1/4" "P" TRAP
2. 1 1/4" LONG SWEEP 90 DEGREE ELBOW
3. 1 1/4" LONG SWEEP 45 DEGREE ELBOW
4. 1 1/4" SANITARY TEE
5. 1 1/4" CONTINUOUS WASTE WITH BAFFLE
6. ROOF VENT
7. MECHANICAL VENT (V-200)
8. 1 1/2" 45 DEGREE "Y" CLEAN-OUT (REDUCE IF NECESSARY)
9. 1 1/2" "P" TRAP
10. 1 1/2" LONG SWEEP 90 DEGREE ELBOW
11. 1 1/2" LONG SWEEP 45 DEGREE ELBOW
12. 1 1/2" SANITARY TEE
13. 1 1/2" x 1 1/4" x 1 1/4" SANITARY TEE
14. 1 1/2" x 1 1/2" x 1 1/4" SANITARY TEE
15. 1 1/2" THREADED FITTING WITH CAP
16. 1 1/2" SLIDE VALVE
17. 3" SLIDE VALVE
18. 3" LONG SWEEP 90 DEGREE ELBOW
19. 3" LONG SWEEP 45 DEGREE ELBOW
20. 3" STOOL FLANGE
21. 1 1/2" 45 DEGREE LONG TURN "TY" (REDUCE IF NECESSARY)
22. 3" TERMINATION CAP
23. 3" LONG TURN DOUBLE ELBOW
24. 1 1/2" x 1 1/4" x 1 1/2" SANITARY TEE
25. 3" x 3" x 1 1/2" LOW HEEL LITTY
26. 3" TO 1 1/2" OFFSET REDUCER
27. 3" 45 DEGREE "TY"
28. 2" x 1 1/2" x 1 1/2" SANITARY TEE
29. 2" LONG SWEEP 90 DEGREE ELBOW
30. 2" LONG SWEEP 45 DEGREE ELBOW

3" SLIDE VALVE INSTALLED WITHIN 36" OF TANK OUTLET
 ALL TRAPS EXCEPT WASHER ARE 1 1/4"
 ALL TRAP ARMS ARE 54" OR LESS
 ALL MATERIAL ABS
 MAIN DRAIN(S) ARE LOCATED 16' FROM REAR OR 12' FROM WHEEL WELL



KING OF THE ROAD SOUTH FRONT ST. RUSSELL, KS. 67665

PRINT. FRAME	REVISION	DATE
MODEL # 2000 R31RL	1 REVISED LTM JACK SUPPORT (WAS 11)	5-20-99
SCALE: 1/4"=12"	2 ADDED 1/2" TO SUPPORT METAL @ REAR	5-27-99
DATE: 4-12-99	3 MOVED 12 VOLT HOLE @ POWER CORD	12-27-99
DRAWN BY: BRUNGARDT	4	
DRAWING: OR31RK-FRAME	5.	



- A. HOLDING TANK SUPPORT 2" L-IRON 84.3/4"
- B. LADDER SUPPORT 2" X 3" X 14 1/2" BOX
- C. TIRE SUPPORT 2" L-IRON 85.1/4"
- D. UPPER FRAME SUPPORT 2" L-IRON
- E. LOWER FRAME SUPPORT 2" L-IRON
- F. BUMPER SUPPORT 4" C-CHNL 85.1/4"
- G. ANGLE SUPPORT 1-1/2" L-IRON 27"
- H. BUMPER SUPPORT 2" X 3" BOX 5"
- I. STEP SUPPORT 2X3 BOX 11 7/8"
- J. LADDER L-IRON 2" L-IRON 28"
- K. ANGLE SUPPORT 2" L-IRON 19.1/2"
- L. AXLE SUPPORT 2" X 5" X 68" BOX
- M. FRAME BRACE 2" L-IRON 97"
- N. FRAME BRACE 2X3 BOX 38"
- O. LTM JACK SUPPORT 2" X 4" X 9" BOX

- 9 EA
- 2 EA
- 1 EA
- EA
- EA
- 2 EA
- 2 EA
- 2 EA
- 1 EA
- 4 EA
- 2 EA
- 2 EA
- 1 EA
- 2 EA

- A. 2" L-IRON 13"
- B. 1 1/2" L-IRON 14.3/4"
- C. 1 1/2" L-IRON 12.1/2"
- D. 2" FLAT-IRON 14"

- A. 2" L-IRON 85.1/4"
- B. 2" L-IRON 82.1/4"
- C. 2" FLAT-IRON 31.3/4"

- L/P BACK MATERIAL
- B. 2 EA 3/16" X 1 1/2" SQ TUBING 14 1/2" LONG
- C. 2 EA 3/16" X 1 1/2" SQ TUBING 5 1/4" LONG
- D. 3 EA 3/16" X 2" L-IRON 11 3/4" LONG
- E. 1 EA 3/16" X 2" L-IRON 8 1/4" LONG
- F. 2 EA 3/16" X 2" X 3 3/4" END PLATE
- G. 2 EA 3/16" X 2" X 1 3/4" END PLATE
- H. 1 EA 1/8" X 2" X 16" FLAT PLATE